

MONTHLY MEMBERSHIP PROGRESS REPORT

LOCATION NORTH CAROLINA

District 31 L

Results as of: 12/31/2022

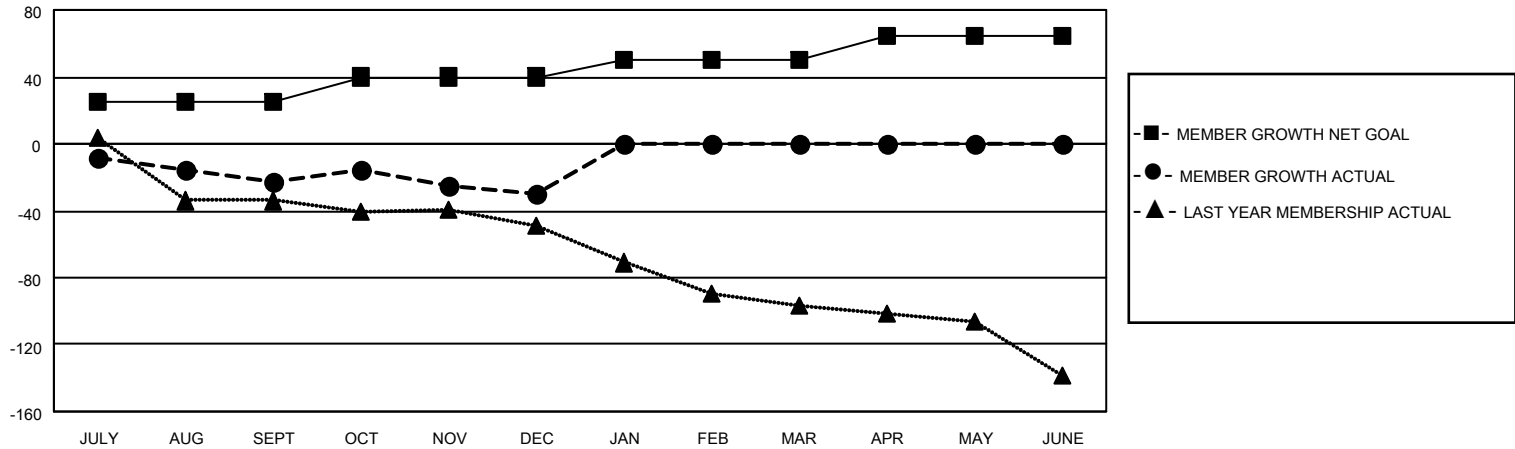
Clubs			
RESULTS FOR 2022-2023			
QUARTER	NEW CLUB GOAL	NEW CLUBS	DROPPED CLUBS
JULY/AUG/SEPT	0	0	0
OCT/NOV/DEC	1	0	0
JAN/FEB/MAR	1	0	0
APR/MAY/JUNE	0	0	0

Members			
RESULTS FOR 2022-2023			
QUARTER	MEMBER GROWTH NET GOAL	MEMBER GROWTH ACTUAL	DROPPED MEMBERS ACTUAL (including transfers)
JULY/AUG/SEPT	25	8	29
OCT/NOV/DEC	15	22	26
JAN/FEB/MAR	10	0	0
APR/MAY/JUNE	15	0	0

GOALS AND ACTUAL NEW CLUBS CUMULATIVE



GOALS AND ACTUAL MEMBERS CUMULATIVE



DROPPED CLUBS: 0

14 CLUBS OF 49 ADDED 1 OR MORE NEW MEMBERS

GENDER DISTRIBUTION

MALE	475 (60.82%)
FEMALE	306 (39.18%)
NON BINARY	0 (0.00%)
PREFER NOT TO ANSWER	0 (0.00%)

DROPPED MEMBERS

[CLICK HERE FOR CUMULATIVE MEMBERSHIP DATA](#)

DECEASED	14
CLUB CANCELLED	0
OTHER	41
TOTAL	55

TOTAL FAMILY UNIT MEMBERS	191
FAMILY MEMBERS PAYING HALF DUES	98